

# Windows 11 Presentation June 14 2023

Windows 11

Drew King

System Restore Points

Recovery Drive 32 GB

# Recovery code

## **When did Windows 11 come out?**

- Initial release date: 5 October 2021
- Biggest update so far (22H2): 20 September 2022

## **Will there be a Windows 12?**

It's looking likely. There was a six-year gap between the release of Windows 10 and Windows 11, but the latter isn't expected to be the last major version of Windows.

The minimum hardware requirements for Windows 11 are as follows:

1GHz dual-core processor

4GB RAM (DON'T BUY LESS THAN 8-16 GB)

64GB of storage

UEFI, Secure Boot capable

Trusted Platform Module (TPM) 2.0

Graphics card compatible with DirectX 12

Display larger than 9in with 720p or higher resolution

Microsoft account + internet connection

Microsoft has a free 'PC Health Check' app.

Enabling Secure Boot is also necessary to run Windows 11, and can be accessed via the BIOS (or UEFI) settings too.

My Surface 8 would not boot from non-Microsoft flash drives until I disabled "BOOT CONFIGURATION LOCK!!"

# Microsoft

<https://account.microsoft.com>

# Windows 23H2 update?

## Confirmed upcoming features

The 23H2 update isn't expected for a few months, but that hasn't stopped Microsoft from [revealing many upcoming features](#). These aren't confirmed to arrive in 23H2, but [Windows Central](#) thinks they will:

- Windows AI Copilot – powerful virtual AI assistant based on ChatGPT and Bing Chat. Can be used to analyse images and text, answer specific contextual questions and control on-device settings
- Dynamic Lighting – built-in tools for controlling RGB lighting on devices and accessories
- One-click Taskbar app ungrouping and show labels
- Ability to hide the date and time on the Taskbar
- New support for formats including 7-zip, RAR, gz, and others
- New AI features in the Microsoft Store – AI-generated app keywords and review summaries, hub for selected AI apps
- Backup and restore apps – will reinstall any apps you've installed from the Microsoft Store when restoring a backup. Unclear if any apps downloaded from elsewhere will be included

As our sister site [PCWorld](#) also reports, these features are also coming to Windows 11. Some may arrive in the 23H2 update, although these aren't confirmed:

- Ability to pin specific apps to a dedicated space on the Widgets panel
- Bluetooth LE (Low Energy) support for reduced power consumption while connected
- Notifications in Start menu if account-related action required
- Ability to turn off presence sensor (on supported devices), which turns screen on you're in front of it and off when you leave
- Isolation of older Win32 apps, allowing them to run independently of the rest of Windows 11 and preventing unauthorised access to processes

In April 2023, Microsoft also began [publicly testing](#) a new Gallery feature within File Explorer. This will make it easier to view photos and videos from within the app, making it look similar to the separate Photos app:

The File Explorer also has a new "pinned files" section in the Quick Access area when you open the app. Users can pin any files to this area and have them stored permanently for quick access at a later date. The File Explorer now has more OneDrive integration too, with a new drop-down menu that appears when inside a OneDrive directly which shows you how much cloud storage you're using.

Microsoft has also updated the nearby share feature, which will now show other devices on a private network in addition to devices within Bluetooth range. Additionally, you can share local files directly to OneDrive using the file share UI.

Task Manager has been updated with a new interface that brings it more in line with the rest of Windows 11. It has a new sidebar navigation UI that automatically collapses when you shrink the size of the window. There's also a new Sound Recorder app coming that has new output options, an audio visualizer, and a much better UI.

Pre-loaded with version 22H2 are two new apps called Clipchamp and Family Safety. Family Safety is a web app that gives you quick access to your family overview, including the locations of your children, upcoming activities in your shared family calendar, and other tools to manage your household. This service is great for families who use Windows and Xbox PCs, or Android devices with the Microsoft Launcher and Family Safety app installed.

Clipchamp is a new web-based video editor, also shipping with Windows 11 moving forward. The app is free to use, though there are paid monthly tiers that you can subscribe to if you want access to more effects and rendering options.

Microsoft is already testing new features with Windows Insiders, and we understand that the next feature drop is currently scheduled to be finalized sometime before the end of March. So far, it looks like the next update will include an updated Taskbar that's optimized for tablet users, a new System Tray overflow menu, Search in Task Manager, and a number of other smaller updates.

Microsoft is now testing a major update to the File Explorer on Windows 11 that introduces a more modern design using Microsoft's WinUI 3.x technology. The new design is similar to a web browser, with your navigation, address bar, and search bar housed in the same row just below the tabs.

The new design also moves the File Explorer command bar to below the address bar, which makes the interface look much cleaner. Microsoft also says the Home page is getting a modern WinUI update as well, which will bring it more in-line with the rest of Windows 11's design language.



# Microsoft just made it easier to get the most out of Android apps on Windows 11

By Sean Endicott published 5 June 2023

You can now share your Windows folders with the Windows Subsystem for Android on Windows 11.

## WSA Advanced Networking

This setting allows Android apps to connect to other devices on the same network as your Windows PC.

When this setting is turned on, you can play content wirelessly. For example, you can play music on a speaker that's connected to the same network or set up hardware (like a security camera) with a compatible Android app.

In April 2023, Microsoft also began publicly testing a new Gallery feature within File Explorer. This will make it easier to view photos and videos from within the app, making it look similar to the separate Photos app:

The big one is a revamped File Explorer. Microsoft already added tabs in an October 2022 update, but this looks to be taking things to the next level. Its updated design will include a redesigned header that's in keeping with many web browsers, with an address and search bar alongside key navigation buttons. There's also a new 'Gallery' feature which is specifically designed for viewing photos, with timeline functionality allowing you to quickly find content from years ago.

## **How to start Windows in Safe Mode from Settings**

If you're able to boot into Windows like normal, it's easy to access Safe Mode:

1. Open Settings
2. On Windows 10, head to Update & Security > Recovery > Advanced startup.  
On Windows 11, it's simply System > Recovery
3. Click the 'Restart now' button, then confirm if required

## How to start Windows in Safe Mode from sign-in screen

If you can't get past the sign-in screen, there's still a way to get into Safe Mode:

1. Press the Shift key and continue holding it
2. At the same time, click the power icon (looks like a vertical line extending from a small circle) and choose 'Restart'
3. Your device should restart on the 'Choose an option' screen. Choose Advanced options > Startup settings
4. Click 'Restart' and your device will reboot once more

## How to start Windows in Safe Mode from blank screen

But what if your device is totally unresponsive? The good news is that there's still a way to use physical buttons to trigger Safe Mode. However, it requires a few more steps than the usual method:

1. Hold down the power button for 10 seconds, or until your device has completely turned off
2. Press the power button once to begin the boot process
3. As soon as you see signs of life, hold down the power button for 10 seconds again
4. Repeat steps 2-3 two more times
5. Press the power button once again, but leave it to complete the boot process this time
6. Your device should now load the Automatic Repair screen. Choose Advanced Options
7. Select 'Startup settings', then 'Restart'
8. Once rebooted, you should see nine options on the screen. Hit the '5' or 'F5' key to enable Safe Mode with Networking
9. Enter your login PIN or password if prompted

# FEATURES YOU SHOULD BE USING!

## Clipboard history

Copying and pasting is something many of us do every day, but there's no need to be limited to one thing at a time. Windows 11's Clipboard history feature lets you access everything you've recently copied in one place, including both text and images, but it needs to be enabled first:

1. Head to Settings > System > Clipboard
2. Make sure the toggle next to 'Clipboard history' is turned on

Now, just use the Windows Key + V shortcut at any time to open Clipboard history, then click any recently copied item to paste it into your new location.

## Taskbar keyboard shortcuts

You've probably pinned apps to the taskbar to make it easy to access them. Why not make the process even faster?

For any windows you have open, Windows Key + 1 opens the first one, Windows Key + 2 opens the second and so on. But if you have nothing already open, the same shortcuts will open pinned apps in the corresponding position from left to right.

It's worth noting that this only applies to apps that you've manually pinned. It won't open the Widgets panel, Start menu, search bar, Task View or Microsoft Teams chat.

## Voice typing

Voice-to-text technology has been around for a while, but did you know there's a version built into Windows 11? It's generally accurate and works everywhere that will let you type, although you'll need to stay connected to the internet.

To get started, simply use the Windows Key + H shortcut and click the microphone icon if recording doesn't begin automatically. Stop at any time by clicking the microphone icon again. It was used to type this sentence, and no edits were required.

## Night light

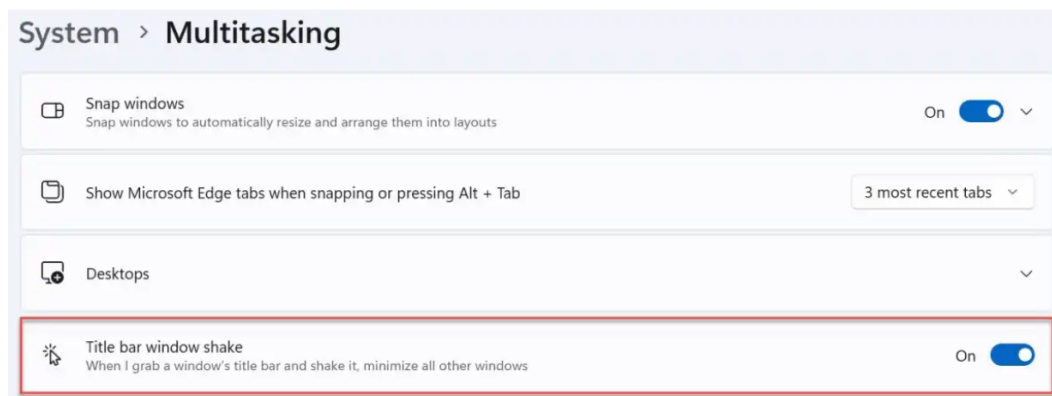
Just like most smartphones and tablets, Windows 11 has a built-in Night light, which shifts your display to warmer tones to help you sleep.

To turn it on, head to Settings > System > Display > Night light and click 'Turn on now'. But you might prefer to set a schedule – either specific hours or sunset to sunrise (if you have location turned on).

## Shake to minimise

If you've got lots of windows open at once, shaking the title bar of one can be used to minimise all the others. But the feature isn't turned on by default.

To enable it, head to Settings > System > Multitasking and turn on the toggle next to 'Title bar window shake'.



## Time stamp in Notepad

The pre-installed Notepad isn't the most advanced note-taking app, but it can be useful to quickly jot things down. One worthwhile feature is a shortcut for adding the current date and time at any moment.

Simply press F5 on your keyboard and it'll appear like below. You can also add this via Edit > Time/Date if you'd prefer.



# Snipping Tool Does Video!!

## Keyboard Shortcuts

LOGO+E = Windows Explorer

LOGO+D = Show Desktop

LOGO +L = Lock Screen

LOGO+A = Action Center

LOGO+SHIFT+S = Screen capture  
part/whole

LOGO+CTRL+Q = Quick Assist - Type  
"quick" in the taskbar search box.

LOGO+H = Voice Typing

## **Windows logo keyboard shortcuts: The complete list:**

<https://www.techrepublic.com/article/the-complete-list-of-windows-logo-keyboard-shortcuts/>



**Shortcut documentation from Microsoft.**

<https://support.microsoft.com/en-us/windows/keyboard-shortcuts-in-windows-dcc61a57-8ff0-cffe-9796-cb9706c75eec>

## File Explorer

Tabs

Quick Access

Navigation bar

Favorites

Libraries

Linux

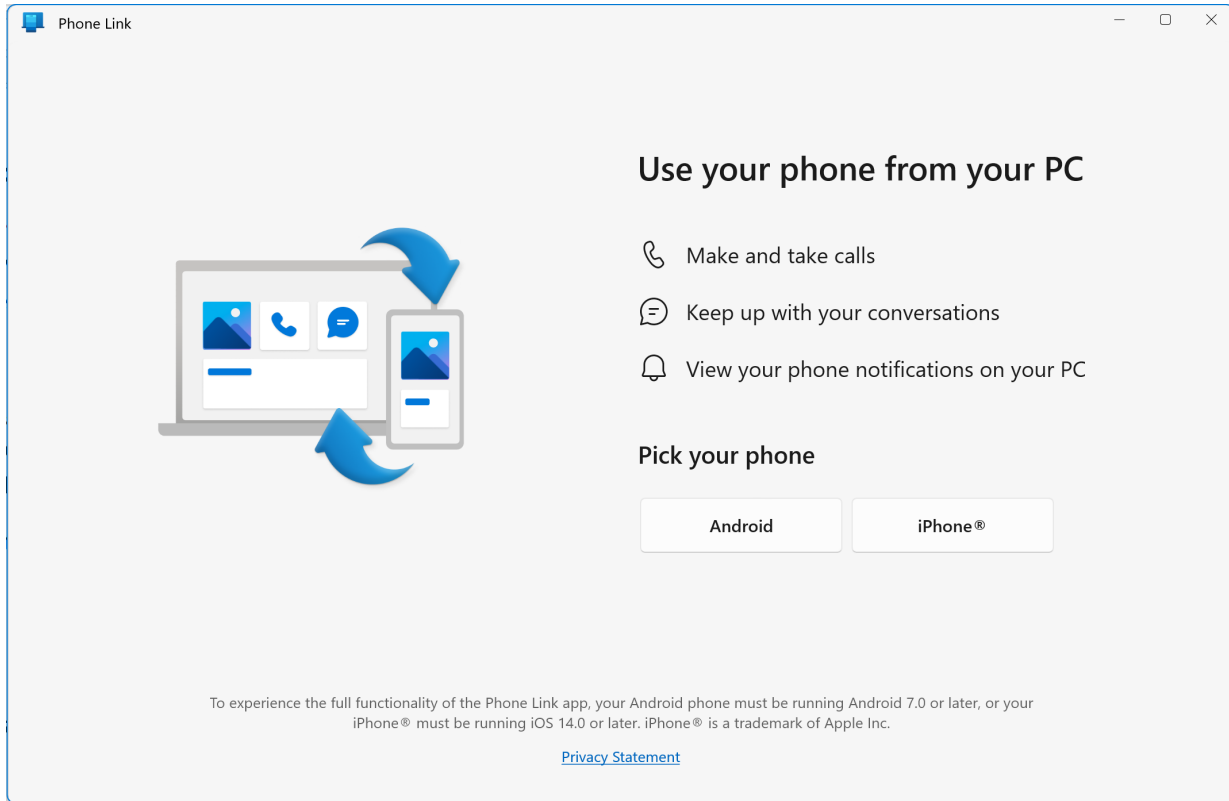
God Mode

Nearby Sharing (Microsoft & Google)

# Notepad

## Phone Link

Used to be Android only  
Apple iPhone now supported



# Settings app replacing Control Panel

Personalization

Menu

Dark Mode

Taskbar

## Snap Layouts

Left/Right  
Top

# God Mode

<https://www.tomshardware.com/how-to/enable-god-mode-windows-11>

WSL - Windows Subsystem For Linux  
show in file explorer  
show terminal window  
show copying files Linux/Windows

For Android phones:

[https://play.google.com/store/apps/details?id=de.shortdev.nearby\\_sharing\\_windows](https://play.google.com/store/apps/details?id=de.shortdev.nearby_sharing_windows)

<https://www.apkmirror.com/>

<https://m.apkpure.com/>

<https://aurora-store.en.uptodown.com/android>

<https://apkcombo.com/aurora-store/com.aurora.store/>

**For Android phones:**

[https://play.google.com/store/apps/details?id=de.shortdev.nearby\\_sharing\\_windows](https://play.google.com/store/apps/details?id=de.shortdev.nearby_sharing_windows)

<https://www.apkmirror.com/>

<https://m.apkpure.com/>

<https://aurora-store.en.uptodown.com/android>

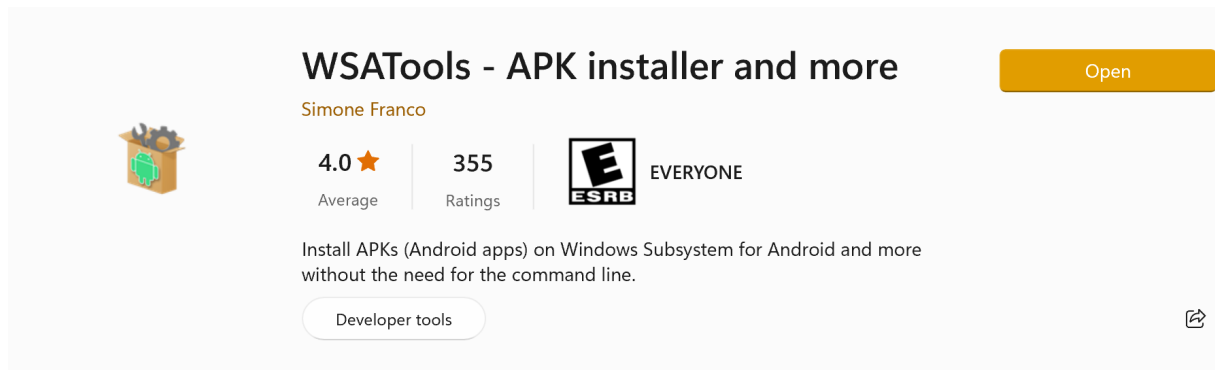
<https://apkcombo.com/aurora-store/com.aurora.store/>

GOOGLE Nearby Sharing Beta

<https://android.com/better-together/nearby-share-app/>

GOOGLE Nearby Sharing Beta

<https://android.com/better-together/nearby-share-app/>



The screenshot shows the Google Play Store listing for the application "WSA Tools - APK installer and more" by Simone Franco. The app icon is a green Android robot inside a cardboard box. The listing includes a 4.0 star average rating from 355 ratings and an ESRB rating of "E" for "EVERYONE". A description states: "Install APKs (Android apps) on Windows Subsystem for Android and more without the need for the command line." There is a "Developer tools" button and an "Open" button in the top right corner.

<https://play.google.com>

Tic Tac Toe

Wintrino

## APK Downloader

No Limit. Fast. All devices

[#TikTok](#) [#Twitter](#) [#Facebook Lite](#)

ABI

Device

Android

DPI

# Android Software on Windows

## Compare to Phone Link

Snapseed  
Backgammon  
Hearts  
Chess

# Power Toys

Send-Anywhere (Works on practically everything) Android, IOS, MacOS, Linux, and Windows.

For now, it's the easiest way to share files quickly.